

DigiCare Sustainability Status and Activities Tampere. 30.8.2022

Sustainability Plan

- SWOT –analysis
- Threat mitigation
- Local and national action plan



Swot analysis - Strengths

- Supportive management
- Capable and willing lecturing staff
- Good facilities in campus
- Strong connections to local health care settings
- Good cooperation locally, nationally and internationally.
- The project implementation is beneficial to the students and patients

Swot analysis - Weaknesses

- Lack of human resources
- Changes in staff
- Limited experience in project work
- limited language and IT skills
- Limited resources and mechanisms for maintaining and funding project outcomes

SWOT Analysis - Opportunities

- High demand of well-educated health care staff
- Increasing demand for outpatient care for chronic patients -> DigiCare Model can offer solutions.
- Asian societies are taking steps in digitalization and are increasingly aware on technological advance in health care and changes in curriculum bring opportunities to integrate DigiCare Model in education.
- International cooperation is bringing opportunities for success and sustainability.




SWOT Analysis - Threats

- Challenges in integrating and accrediting DigiCare Model in education
- Losing competent academics and HCPs through changes in staff and labour export.
- Patients' mistrust and reluctance to new style of guidance -> affects patient-HCP interaction
- Low health literacy and poor network hinder establishment of the DigiCare Model practices in health care.
- No general mechanisms and policies to support the replication of project results
- HEI's dependency on policies and policy changes by supervising government authorities.

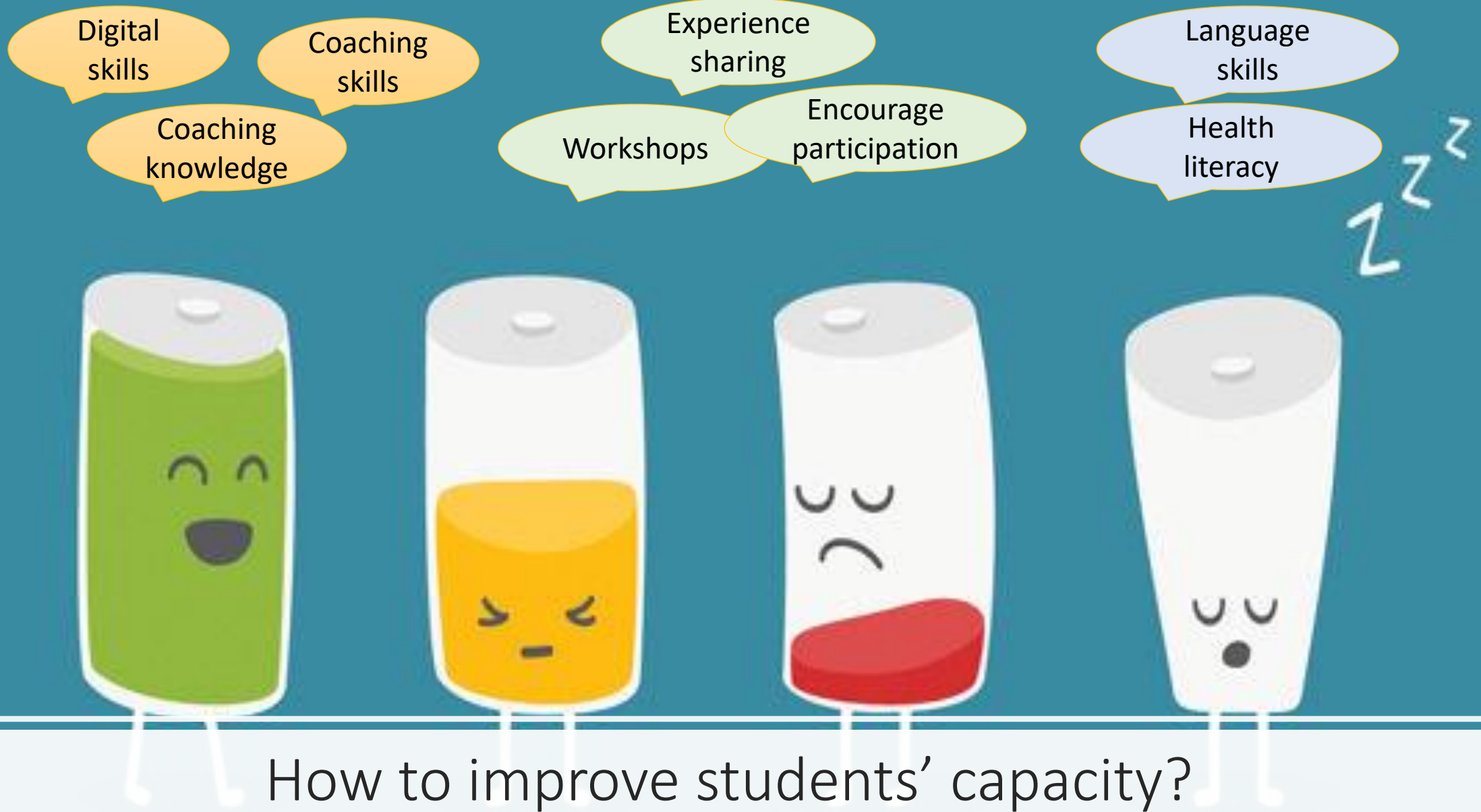
How to mitigate threats?

- Sharing experiences about the project work with management, academic staff and clinical environment to form a basis for future learning activities, attract more students, help to strengthen the network locally and nationally and sustain the project work.
- Continue training academic staff to utilize DigiCare project outputs and strengthen their theoretical knowledge and coaching skills to support competently patients' self-management of chronic diseases.
- Ensuring local technical and digital environment is functioning -> improve learning and competence building.
- Encouraging students to learn English to enable their scientific competency building and future career development.



**PROBLEM
SOLVING IN
PROGRESS**

**SOLUTION
UNDERWAY**



Local Action Plans

Teams to maintain project sustainability

TOT protocols

DigiCare Integrated courses and Elective individual courses

Project outcome Workshops, seminars, symposiums

Digital competency building

Networking with other HEIs

Institutional monitoring teams

Working groups to collaborate with clinical organizations & HCPs

Clinical tutoring programs

National Action Plan

THANK

YOU