

# Tampere University of Applied Sciences



TAMK is a multidisciplinary, international UAS focusing on promotion of wellbeing and health, business and production by means of new learning methods and creativity.

# TAMK is the second biggest UAS in Finland

approx 10 000 students  
over 40 degree programmes  
approx 700 employees



# History

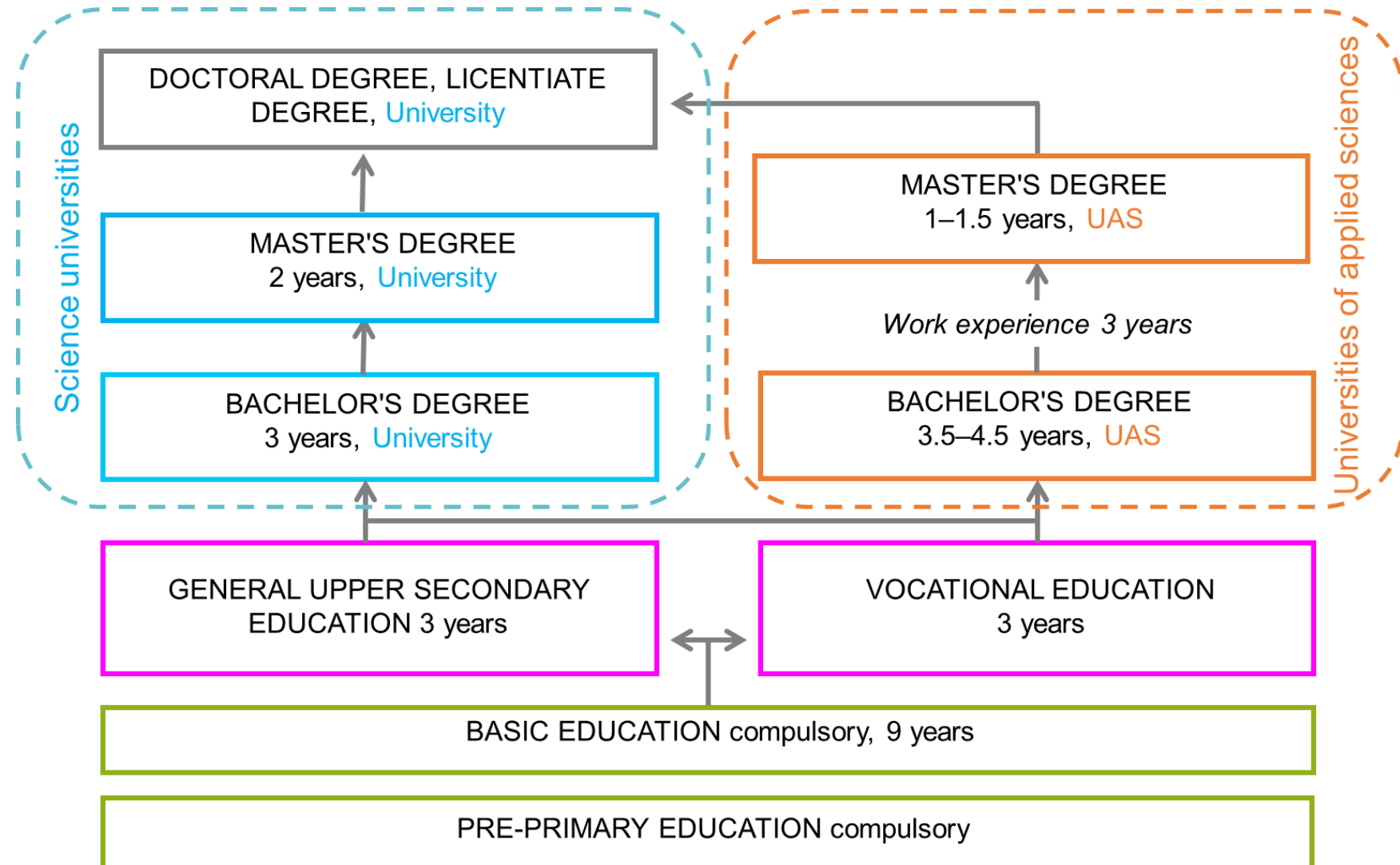
- roots in year 1912: the first technical college in Finland
- higher education institution status in 1996
- merger of two UAS's (TAMK + PIRAMK) in 2010

## TAMK today

- oriented towards working life in education as well as RDI cooperation
- offers a diverse and multidisciplinary environment and lifelong study options
- fields of expertise: business, health care & wellbeing, technology & production, environment, culture, professional pedagogy

Member of the  
**Tampere  
Universities  
community**  
since 2019

# Finnish education system in brief



# New competences for future needs

*Working life needs professionals who are internationally networked and have the acquired practical tools and theories.*

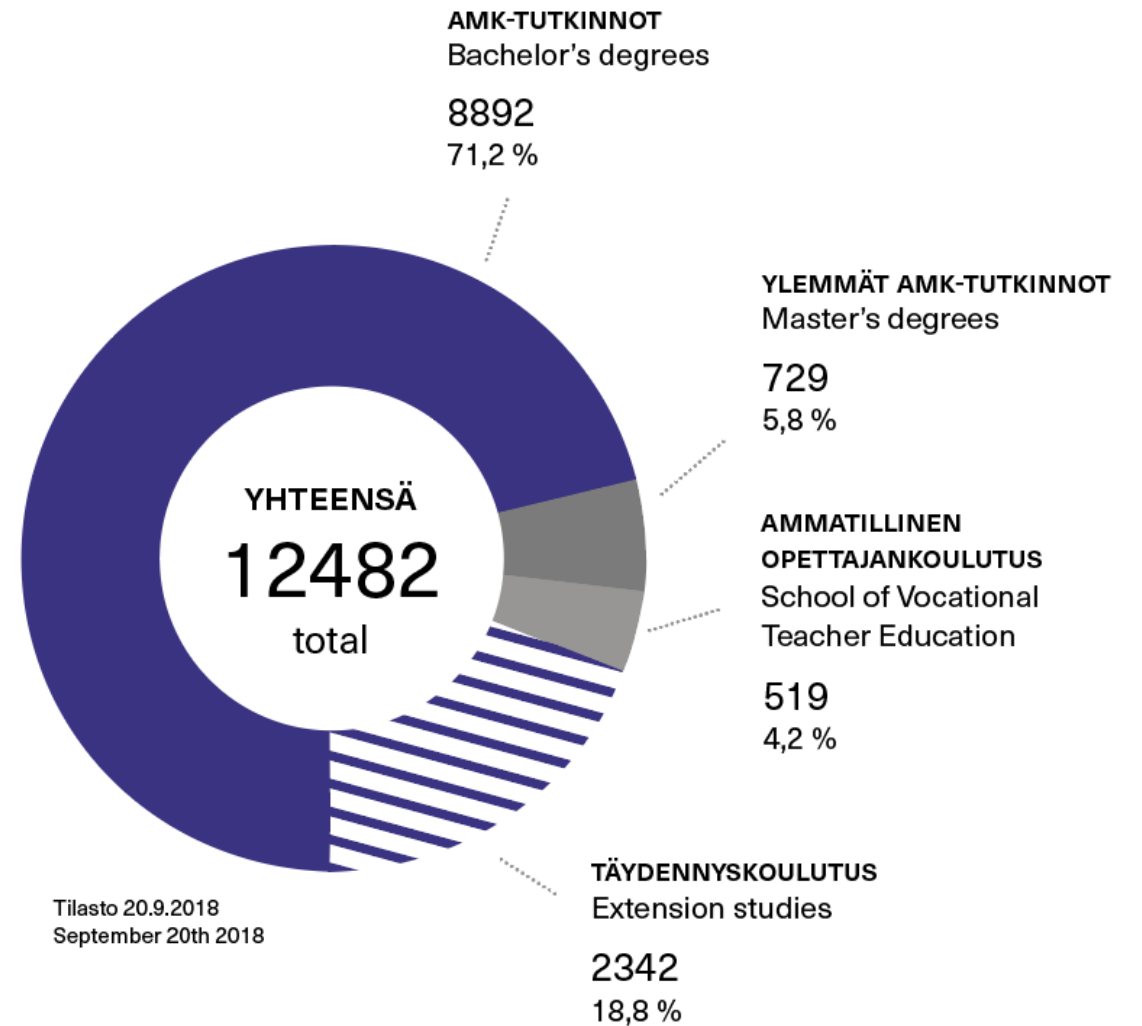
*TAMK gives an opportunity to create your own career path and update your skillset.*

## Universities of applied sciences

- Responsibilities
  - Education
  - Research & development
  - Regional development
- Studies are a combination of theory and practice
- Primarily funded by public funds

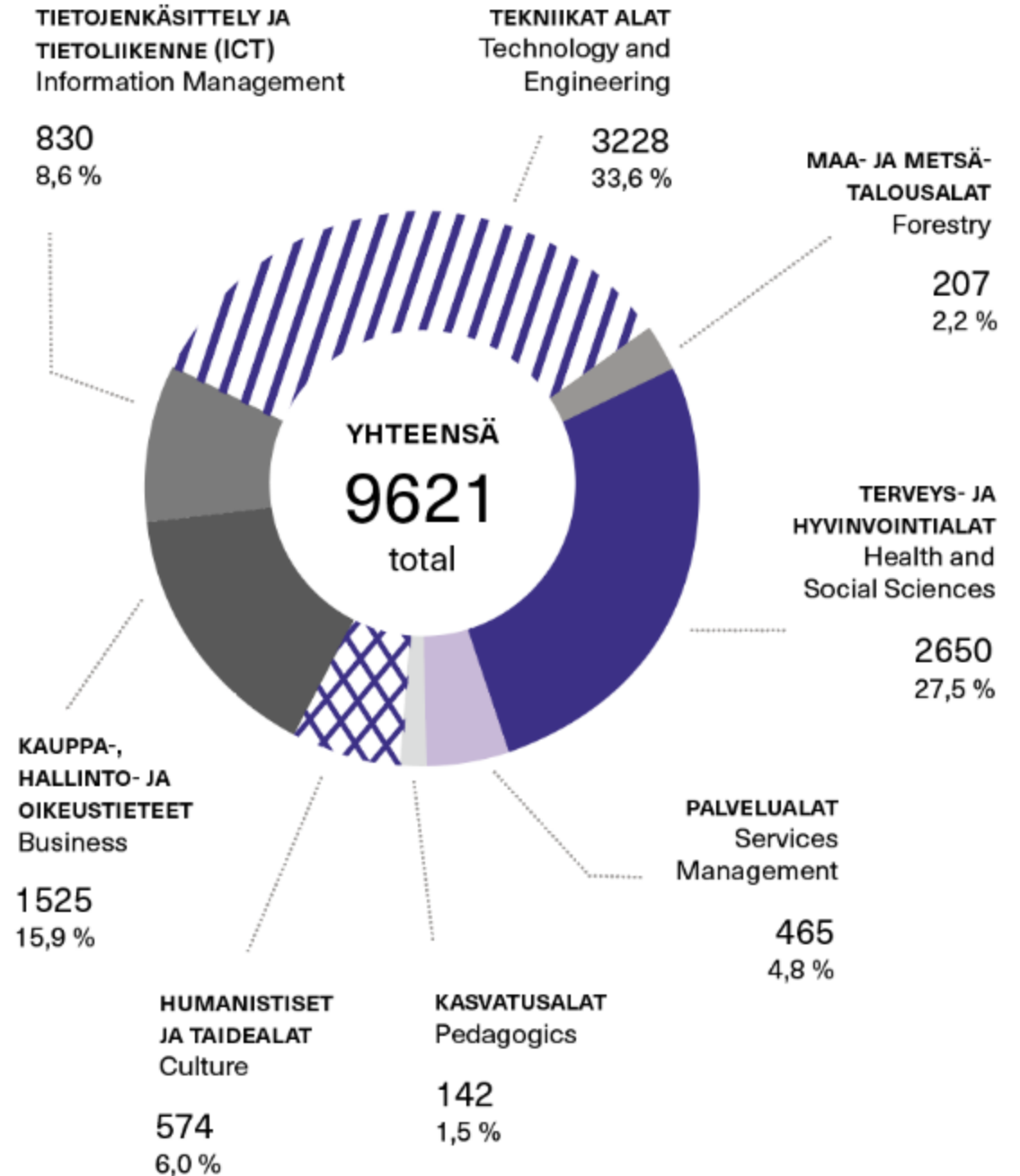
# All students

- 17 bachelor's degrees
- 15 master's degrees
- More than 40 degree programmes
  
- Professional teacher education
- Open university of applied sciences
- Extension studies



# Degree students

- TAMK is the most popular UAS outside the capital area in Finland
- approx 5 primary applicants per each study place
- 8 fields of study





# Degree programmes in English

+ Professional Teacher Education

## BACHELOR'S PROGRAMMES

- Environmental Engineering
- International Business
- Media and Arts
- Nursing
- Software Engineering

## MASTER'S PROGRAMMES

- Educational Leadership
- Emerging Media
- International Business Management
- Screenwriting





# Innovative learning environments

OpenLab

Catering Studio

Mediapolis

Proakatemia

Y-kampus

Fiilis Center for wellbeing services

Music Academy

SCIL Smart Campus Innovation Lab

Taito Center for skills training and simulation

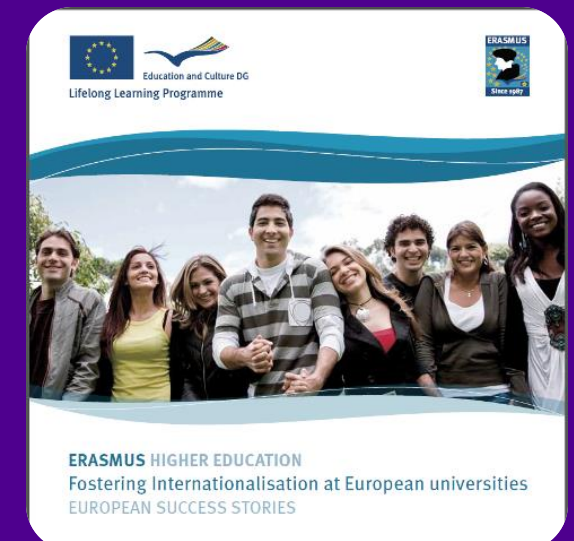
HeAT Lab Health and Assistive Technology Laboratory



etc.

# International collaboration

- 360 partner universities in 55 countries
- Student and staff exchanges
- International projects and networks
- International weeks
- Intensive courses



# Cooperation with business life

- Advisory Boards for study programmes
- Practical training periods for students
- Thesis and project work
- Research, development and innovation projects



# Strategic focus areas

*We have outstanding expertise in our five chosen focus areas, and collaborate closely with working life in all these fields.*

- Energy-efficient and healthy built environments
- Developmental expertise in pedagogy
- New operational models for health care and social services
- Entrepreneurship and innovative business
- Intelligent machines and smart devices

# Global activity

- TAMK's international business operations include export of education
- We provide education and consulting services to international groups worldwide, both in Tampere and online
- Developing pedagogical ideas into new learning methods is one of TAMK's key strategic focus areas
- Pedagogy is TAMK's export product number one



# TAMK excels in image surveys



#1 in popularity among universities of applied sciences in Finland

# Tampere, Finland

**FINLAND** is a land of fascinating contrasts, between east and west. It is well-known for its high quality education, social security and healthcare, high-tech expertise as well as its unspoilt nature.

**TAMPERE** is the largest inland city in the Nordic countries. It is an ideally located “big-small-city” with 230,000 inhabitants and a vivid culture. The “most student friendly city in Finland”.



# Why Finland, why TAMK?

- Finland ranks high in different comparisons between countries  
  
e.g. Social Progress Index, Human Capital Index, Lowest Corruption Index, OECD Better Life Index, Sustainable Society Index
- High-class education
- Attractiveness of Tampere
- Valued in the labour market
- Good reputation among students
- Interesting fields of study
- Stands out as a forerunner
- New Tampere higher education community

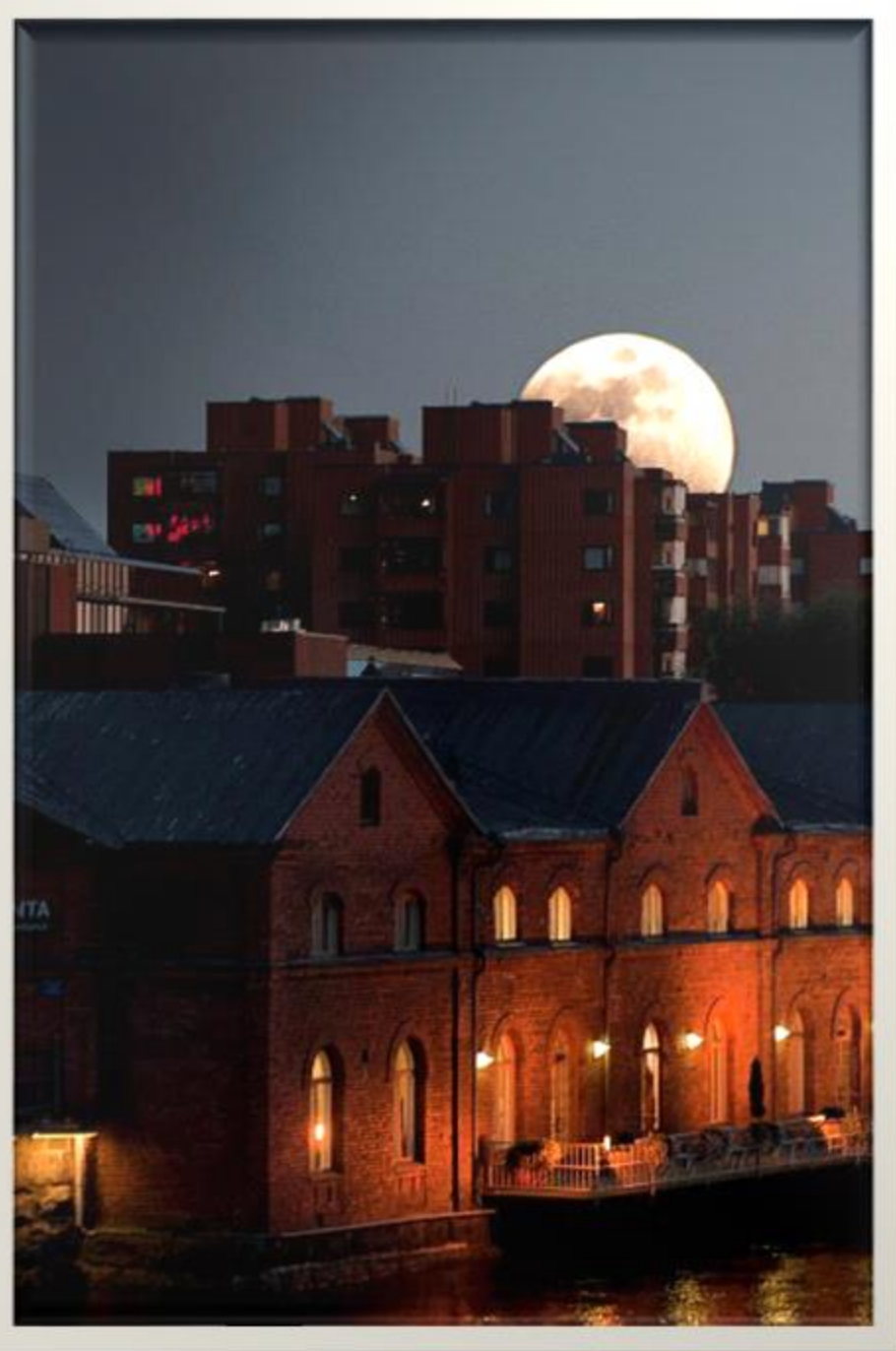


*President Markku Lahtinen*



# Tampere - Tammerfors

- Population of ~235,000 (over 500,000 in the region)
- Biggest inland city in the Nordic countries (population)
- Founded in 1779 by Gustav III of Sweden
- Situated between two lakes; the rapids utilized for power made Tampere an important industrial city
- 40,000 higher education students



# This is what **we stand for**

*Strategy towards 2020*

## **Mission**

Our strong orientation towards working life ensures the best learning possibilities for our students. Furthermore, we are involved in research, development and innovation which specifically target the development needs of working life.

## **Vision**


TAMK - the best professional higher education that Finland offers to the world.

## **Strategic imperatives**

Lifelong learning skills and competences for future needs; Securing private sector funding; Innovative, multidisciplinary focus areas grown from our expertise; International dimension in all our operations

## **Values**

a sense of community; respect for the individual and individual differences; sustainable development; appreciation of expertise and entrepreneurship



*TAMK is joining forces with Tampere University.  
Together these will constitute Finland's most diverse  
higher education and research community.*

# Tampere Universities



# The Tampere higher education community has a new way of doing things.

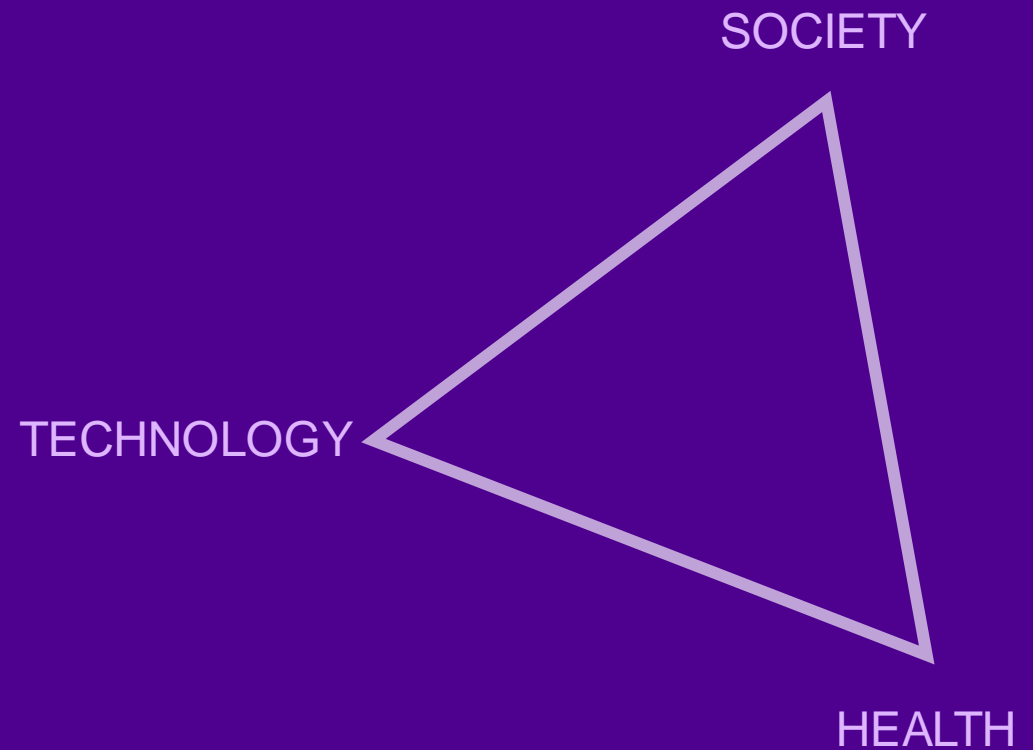
The priority areas of the new Tampere higher education community are technology, health and society. Our particular strength is the combination of these areas.

We work to solve society's major challenges and create new opportunities. Our efforts are steered by a commitment to link pioneering research and innovation, promote interdisciplinary education and life-long partnerships, and generate unique expertise in industrial and public-sector implementation.

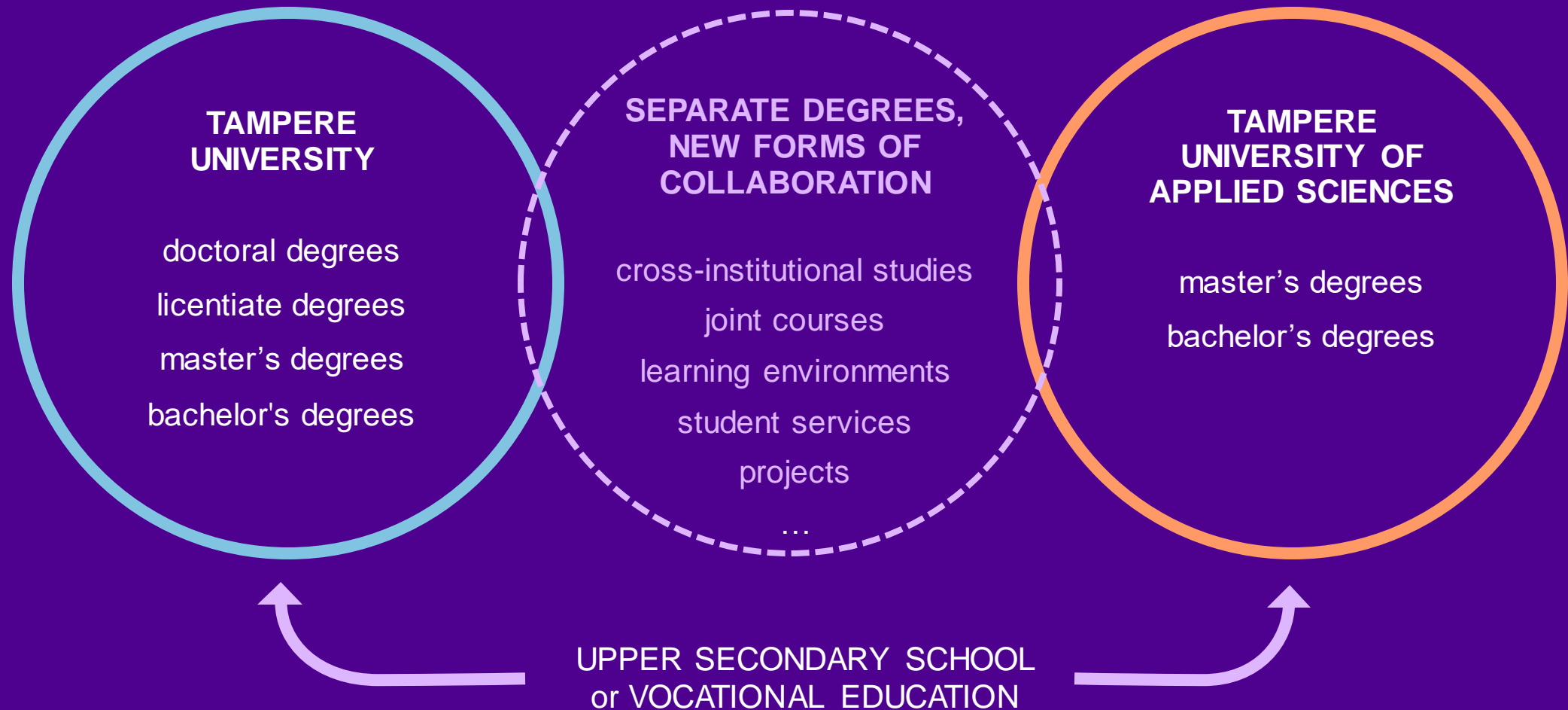
Our aim is to offer our students flexible and individual study paths that enable them to develop in-depth expertise, mutual understanding, and grasp broad multidisciplinary perspectives.

# Integrated multidisciplinary

- We boldly transcend the boundaries of technology, society and health.
- The research, development and innovation network will intensify its operations and combine all the levels from fundamental to applied research and service concepts.

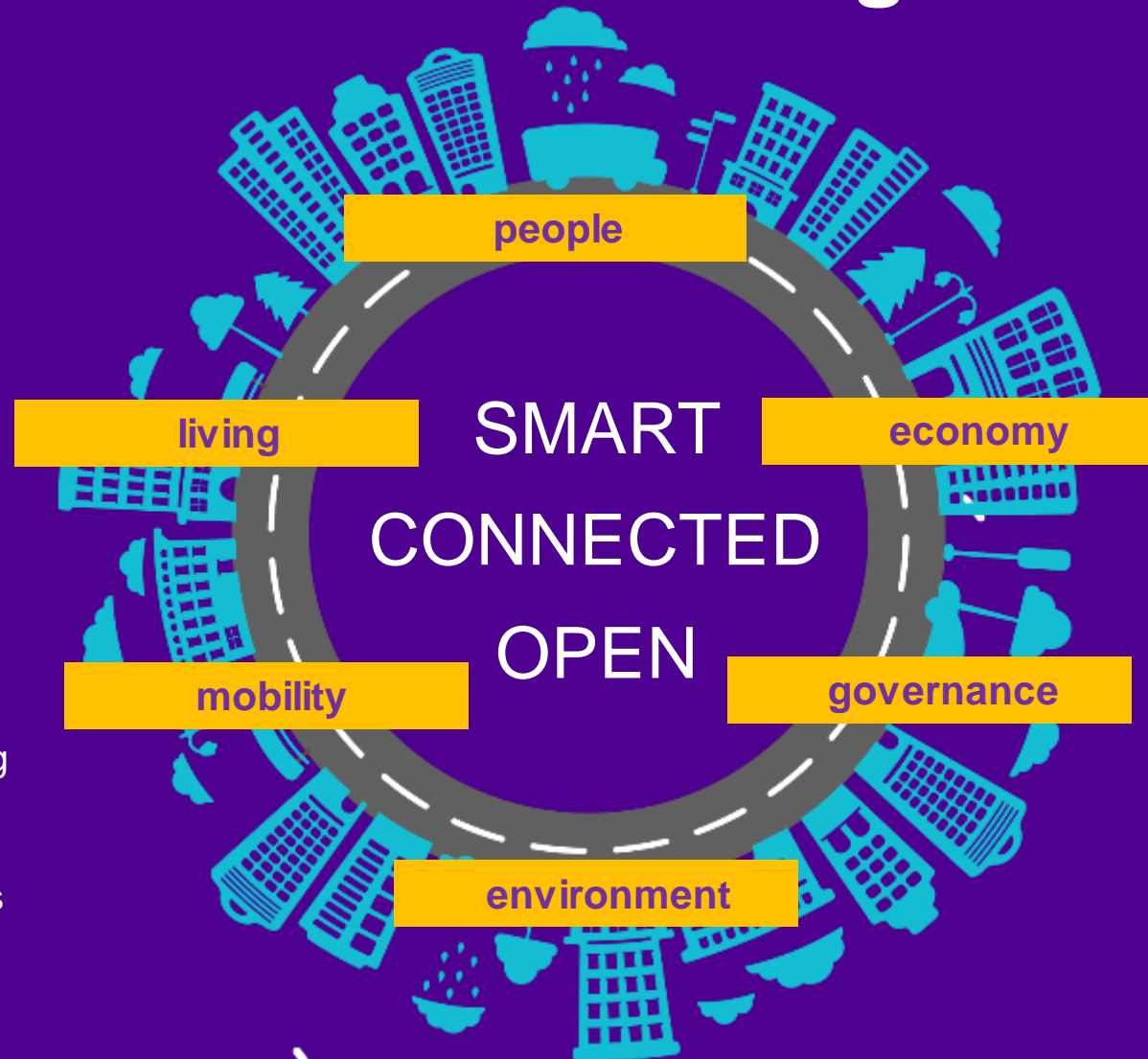


# Two degree routes



# The city environment as a living laboratory

- Health and wellness
- Culture and individuality
- Easy and accessible
  
- Traffic as a service
- Connected, interactive and citizen-oriented environment
- Electronic mobility
  
- Eco-efficient urban planning
- Industrial symbiosis
- City development platforms



- Open innovation platforms
- International collaboration
- Industrial ecosystems
  
- Open data
- Innovative procurement
- Transparent administration



# Benefits of the new higher education community

## For students

- opportunity to build and follow their own study paths in the multidisciplinary higher education community

## For researchers

- multidisciplinary and increasingly high-quality research environments, projects and interdisciplinary perspectives
- results that benefit our entire society

## All sectors

- joint projects on different levels of education and research
- highly qualified professionals for the evolving job market
- developing continuing education as an ongoing dialogue

## Higher education community

- a new culture of working together and exploring novel approaches

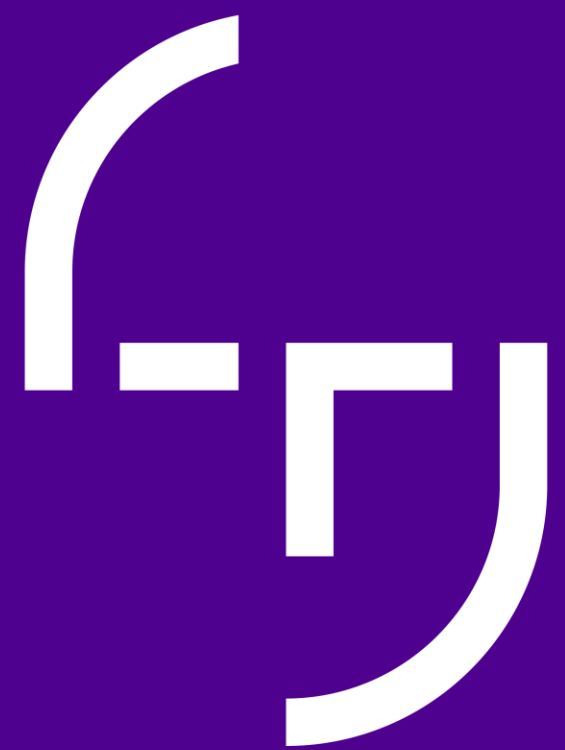


more than 30,000 students  
nearly 5,000 employees

**Tampere Universities**  
is a dynamic community of over  
35,000 members!



L. DA Vinci



**Human  
Potential  
Unlimited.**