

Services in Health, Sports and Wellbeing

RDI Collaboration Possibilities for Companies in Tampere Area



Co-funded by
the European Union



TAMPERE

The Wellbeing Services
County of Pirkanmaa



VARALA

Updated on
22.6.2026

Introduction

Tampere area offers a variety of services for companies and communities in **research, development and innovation**. This summary of services is aimed especially for **health, sports and wellbeing companies** for an easy and fast way to find forms of cooperation that suit their own needs.

You'll find the services offered by Tampere University (TAU), Wellbeing Services County of Pirkanmaa (Pirha), Varala Sports Institute, UKK Institute and Tampere Research Center of Sports Medicine, and Hakametsä Sport Campus / Tampere City.

This compilation was made for the [Tomorrow's Sports and Health Campus project](#) funded by European Regional Development Fund and the Council of Tampere Region.

Table of contents

Research Services and forms of collaboration:

1. Tampere University

1.1 Services by MET core infrastructures

1.2 Services by SOC core infrastructures

1.3 Contract research

1.4 Collaboration with students

1.5 Public funded Collaborative research

1.6 Research services in TAMK

2. Wellbeing Services County of Pirkanmaa

3. Hakametsä Sport Campus / City of Tampere

4. Varala Sports Institute

5. Tampere Research Center of Sports Medicine/ UKK Institute

6. Testbeds

6.1 HeAT-laboratory

6.2 Civit

6.3 Visaxion

6.4 WellTech Lab

6.5 Tampere Centre for Skills Training and Simulation (Taitokeskus)

6.6 Regea Tissue Center

6.7 Tampere Biobank

6.8 HealthHUB

7. Social media and newsletters

1. Tampere University

There are several ways to collaborate with Tampere University, whether in large scale research projects or detailed testing needs. RDI projects in the Health, Sports and Wellbeing area often relate to MET or SOC faculties. To know more about other faculties, please visit [University's website](#).

1.1 Services by MET core infrastructures

1.2 Services by SOC core infrastructures

1.3 Commissioned research

1.4 Collaboration with students

1.5 Public funded Collaborative research

1.6 Research services at TAMK



Pic: Marko Kallio

1.1 Services by MET core infrastructures

Faculty of Medicine and Health Technology

- Specialized services are usually small and standardized services that companies can buy.
- MET core facilities and services offer specialized services for companies which are divided into 7 categories: Imaging, Genomics and Biomedical Informatics, Cells and Tissues, Measurements, Model Organisms, Biomaterials and Micro and Nano Devices and Protein Services.
 - These categories include different kinds of services and facilities.
 - The services include for example expensive devices for measurements that can be rented by companies.
 - You can find more information on [tuni website](#).
- Applications range from cells, tissues and model organisms to virus production, gene and protein technology, biological measurements, bioinformatics and modelling, nano- and microfabrication, biosensors and probes, biomaterials processing, bioimaging and materials analysis.
- We offer these research facilities as testbeds or as facilities for contract research and collaboration as well as for preclinical and clinical tests.

1.2 Services by SOC core infrastructures

Faculty of Social Sciences

- [The Faculty of Social Sciences](#) brings together research on society and health in a new way, and its contribution helps to solve different welfare challenges.
- The Faculty's strong research themes cover a wide range of fields:
 - Social cognition and interaction ([HIP-Lab](#)), Gender and body, Migration & multiculturalism, Childhood, youth and family research ([PERLA](#)), Ageing and the health and functional ability of the older adults ([GEREC](#)), Working life, well-being at work and occupational health ([WRC](#)), Welfare services, Causes of cancer & reducing the causes and effects of the disease, Cultures of politics and governance ([TaSTI](#)), Science, technology and innovations ([Emerging Technologies Lab](#), [TaSTI](#)), Violence, conflicts and peaceful change ([TAPRI](#)), Social theory, Social history ([HEX](#), [Trivium](#)).
- Research is conducted across a broad range of disciplines (e.g., sociology, social policy, psychology, health sciences, epidemiology, nursing science, history, philosophy) and within strong research centres and Centres of Excellence.
- The Faculty provides expert research collaboration, support for competitive research funding, and impactful partnerships to address key societal challenge.
- You can find more information on [tuni website](#).

1.3 Contract research

- Contract research projects are tailor-made to serve the specific needs of a customer company. Frequently, the service is bought from a research group, which the company can contact directly. Contract research projects are funded by the customer company, but the company may seek financial support, for example, from [Business Finland](#), [ELY-center](#) or the [EU](#).

Who's it for?

- Companies and organizations interested in tailor-made research projects.

How does it all happen?

- Get to know [the research groups](#) and contact the one that suits your specific needs. If you can't find what you are looking for, email or call our contact persons.
- The customer company defines the goals of the project.
- The results and intellectual property arising from the project are transferred to the customer company.
- The project may be conducted in the facilities of the customer company or university.

Contact:
Pasi Vakaslahti
Head of Collaboration Services
pasi.vakaslahti@tuni.fi
+358405116128
Hervanta campus

1.4 Collaboration with students

- Collaboration with students can mean finding interns, commissioning a thesis or taking part in annual events.
- You can discuss your opportunities to collaborate with students with career services at Tampere University (urapalvelut.tau@tuni.fi) or at Tampere University of Applied Sciences (careerservices.tamk@tuni.fi).
- Industry Ambassadors are students who visit local companies to introduce all the opportunities and services that Tampere University offers for industry and business.
- Kampusklubi is a collaboration platform for companies, students and academics. The aim is to create cooperation between companies and the university. The focus is to make concrete things happen, create new projects, network and find experts.



Pic: Jonne Renvall

1.5 Public funded collaborative research

- Large volume research projects are continuously applied and executed by the university's research groups.
- These projects offer great opportunity for companies to collaborate and obtain funding also for their own research, development and innovation.
- Major sources of funding include Business Finland and European Union.
- Contact, discuss, and express your interest to join future applications to the groups relevant for your business.



Pic: Jonne Renvall

1.6 Research services in TAMK

- At Tampere University of Applied Sciences (TAMK), research, development and innovation integrate multidisciplinary expertise and modern learning environments with strong collaboration across industry, the public sector and society, applying the latest research to deliver socially impactful solutions at regional, national and global levels.
- Don't hesitate to take part in RDI activities! Many of the challenges faced by businesses, organizations, and the public sector lack ready-made solutions, which is why new approaches and methods must be sought.
- Applied research infrastructure enables co-creation methods.
- Visit tuni.fi website for more information about TAMK's areas of strength, research groups, infrastructure and projects.

Contact:
tki.tamk@tuni.fi

Or contact our RDI experts directly

2 Wellbeing Services County of Pirkanmaa (Pirha)

- Research Services assist in planning of research and development projects, conducting studies, applying for and managing funding and legal issues related to research, such as patenting inventions.
- Contact information can be found on Pirha's website (in Finnish).

Collaboration requests on development projects

- Contact The Pirha Project Office if you want Pirha to be a partner in your project or sub-project: projektitoimisto_tkio@pirha.fi

Further information:
clinicaltrials@pirha.fi
Email contact preferred

3 Hakametsä Sport Campus

- In the coming years, Hakametsä Sport Campus will offer a modern, international hub for business and RDI—a dynamic environment that unites diverse sectors and stakeholders. The state-of-the-art technology ecosystem enables advanced performance tracking, seamless data collection and sharing, and full digitalization of events.
- The campus will serve as a living lab, where athletes and individuals of all ages and skill levels contribute to research and testing. By bringing together public and private actors, the area will evolve into a value-creating ecosystem, fostering collaboration, innovation, and growth.
- For more information about the future plans for Hakametsä Sport Campus area is found [on Hakametsä website](#).

Markus Joonas
Urban Development Manager
markus.joonas@tampere.fi
+358 50 345 0705

4 Varala Sports Institute

- Varala Sports Institute offers RDI services for companies in various stages of product development through collaborative planning. Customer needs are taken into account as a part of the overall research and development process.

Services for companies

- Validation
- Verification
- End-user acceptability testing
- Certification

More information on [Varala Sports Institute's website](#) (in Finnish).

Location: Varalankatu 36, 33240 Tampere

Prices: Prices will be defined based on customer needs. Please inquire!

Contacts:
info@varala.fi
+3583 2631 111

Test Manager
Jere Ahonen
jere.ahonen@varala.fi
+358 44 345 9953

5 Tampere Research Center of Sports Medicine/UKK Institute

Tampere Research Center of Sports Medicine is a part of the [UKK Institute](#) and one of the six Sports Medicine Centers in Finland.

Key research areas are

- Prevention of sports and physical activity-related injuries
- Promoting the health of physically active individuals and athletes
- Exercise physiology

Visit also [Healthy Athlete Program's website](#) for education and science communication.

**Research and RDI
collaboration inquiries:**
Mari Leppänen
mari.leppanen@ukkinstituutti.fi

More information on
[Taula website](#)
Contact:
taula@ukkinstituutti.fi

6 Testbeds

Testbeds are test environments simulating real-life treatment situations. They offer companies the opportunity to develop, test, validate and conduct usability studies for their solutions in a real environment. Equipments and instruments for research and testing are available in testbeds. [Business Tampere](#) coordinates Tampere Health ecosystem and testbed listing on their website.

[6.1 HeAT-laboratory](#)

[6.2 Civit](#)

[6.3 Visaxion](#)

[6.4 WellTech Lab](#)

[6.5 Tampere Centre for Skills Training and Simulation \(Taitokeskus\)](#)

[6.6 Regea Tissue Center](#)

[6.7 Tampere Biobank](#)

[6.8 HealthHUB](#)



Stock Image

6.1 HeAT – Health and Assistive Technology

- HeAT Laboratory is an environment for the study and development of health and assistive technology and services. HeAT provides a wide set of research-quality equipment especially for measuring human physiological signals and 3D motion. Equipment can also be utilized outside the lab for mobile measurement setups.
- We welcome companies to use the lab or collaborate with our experts on health technology ranging from physiological measurements, signal analysis, computational modelling, and with health care professionals. Companies can use HeAT for developing new product ideas, testing and validating of new products and conducting usability studies.
- More detailed information about the **equipments** can be found [on tuni website](#).
- Health and wellness technology companies can also utilize the laboratory for R&D purposes, either independently or in collaboration with university researchers.

Prices: Prices will be defined based on customer needs. Please inquire!

Location: Hervanta campus, Tampere University

Contacts:
Milla Juutinen
Tampere University
milla.juutinen@tuni.fi

Antti Vehkaoja
Tampere University
antti.vehkaoja@tuni.fi

6.2 Civit

- [Civit](#) provides research facilities and expertise in the sectors of visual content creation and representation of visual data, advanced displays, and immersive user experience.
- Equipment includes various high-end cameras, advanced displays, range sensors and LIDARs, VR/AR and other immersive gear. CIVIT premises in Sähköotalo, Hervanta Campus, include capture and display studios, plenoptics lab and a UX room.
- More information in [Equipment Catalog](#) or [Full list of equipment](#).
- Civit offers different services for companies from tailor-made exclusive research projects to short-term, easy access POC-projects. Equipment rental and standardised 3D reference data is possible for testing and development needs.

Location: Sähköotalo, Hervanta Campus.

Prices: Companies can rent our equipment or get access to our facilities through research projects. You can also collaborate with us in smaller projects, such as Proof of Concept-projects.

Contact:

civit@tuni.fi

Subscribe to [newsletter](#)

6.3 Visaxion

- [Visaxion](#) is a novel research and development simulation environment that enables bringing functional vision testing in safe and controlled manner close to people and in connection with daily tasks.
- For functional traffic vision testing, Visaxion offers a configurable driving simulator and a 180-degree display solution that covers the entire human field of vision. Simulation environment enables measurements related to the driver's field of vision, reaction time and situational awareness, as well as studying the effect of optical aids and lens solutions on traffic vision.
- The occupational vision testing environment consists of controlled lighting conditions and various functional vision tests. Together with the eye and head movement tracking, the simulation environment can be applied to measure functional vision, gaze paths and gaze speed from children to adults within diverse tasks.
- Visaxion is well suited for companies, researchers, healthcare, and educational institutions interested in human functional vision. In addition, various usability studies of eye medications and optical aids can be conducted in both environments.

Location: Arvo Ylpön katu 34, 3350 Tampere. Kauppi Campus.

Prices: Prices will be defined based on customer needs. Please inquire!

Contact:
hannu.uusitalo@tuni.fi

6.4 WellTech Lab

- [The WellTech lab](#) specifically focuses on researching and developing remote digital services.
- Our aim is to develop user-driven and human-driven technology solutions and services for social and health care and to strengthen related knowledge.
- More detailed information about the facilities, equipments and services can be found [on WellTech lab's website](#).

Services for companies:

- Pretesting at standardized Lab environment
- Testing and product development in authentic environments, Living Labs
- References and pilot study cases
- Pop-up space, showroom for technologies

Location: TAMK's main campus in Kuntokatu 3, building F, 2nd floor

Prices: Prices will be defined based on customer needs. Please inquire!

Contacts:

Kirsi Mansikkamäki
kirsi.mansikkamaki@tuni.fi
+358 50 597 0184

welltechlab.tamk@tuni.fi

Marjo Tienari
Lab Coordinator

Jaana Vainionpää
Testing and Product Development
Services Coordinator

6.5 Tampere Centre for Skills Training and Simulation (Taitokeskus)

- Tampere Centre for Skills Training and Simulation is a training centre owned by TAU, TAMK and Pirha. It includes facilities designed for learning clinical skills as well as simulation rooms where medical students, students in health-care-related fields and professionals can work on practical skills.
- The simulation rooms mimic real-life hospital wards, emergency rooms, intensive care units, operating rooms and maternity wards.
- Visit [Taitokeskus website](#) for more info.

Prices: Prices will be defined based on customer needs. Please inquire!

Location: Arvo-building, Arvo Ylpön katu 34, 33520 Tampere

Contact:

Executive director
Nina Hutri
Nina.hutri@tuni.fi
+358 50 318 6288

Find @taitokeskus on
[Facebook](#)
[Instagram](#)

6.6 Regea Tissue Center



Regea Tissue Center is a clinical tissue bank and a GXP manufacturing unit for tissue and cell-based products. Regea is part of Tampere University Faculty of Medicine and Health Technology.

Regea procures and distributes tissue transplants (musculoskeletal tissues, amniotic membrane and cornea) for clinical use. Regea also imports tissue transplants (pericardium, sclera, amniotic membrane, demineralized bone) to Finland. Donated tissues are used for treating a wide range of serious illnesses and injuries.

Regea was among the first in the world to start the manufacture of tissue engineered products for clinical applications. Close to 30 patients suffering from bone tissue defects have been treated with stem cell based medicinal products. The treatments have been made in collaboration with Finnish hospitals.

Infrastructure

Quality system based on the principles of Good Manufacturing Practice (GMP)

Cleanrooms classified according to EU GMP A/B, A/C, A/D (~ISO 14644 classes 5-8)

Quality control laboratories and equipment for the testing of tissue and cell-based products

Services

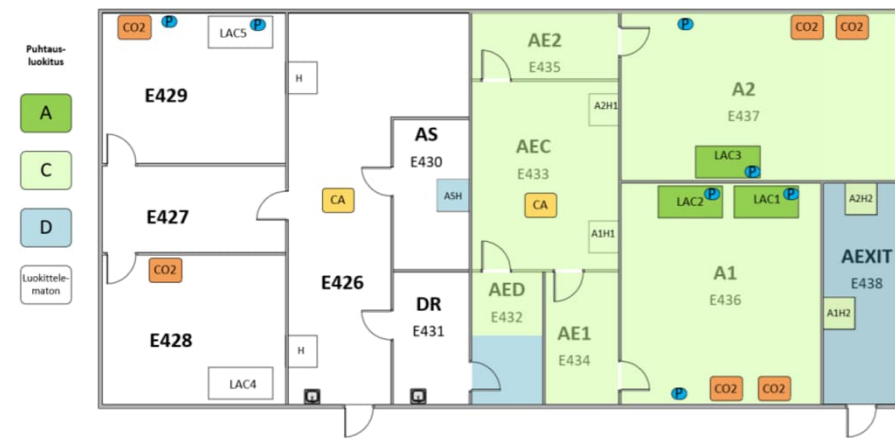
Manufacturing of tissue and cell-based products

Cleanroom rental including training, accessories and services

Assistance in setting up a quality system, equipment qualifications

Contact information: Group leader, Quality manager Tiiia Tallinen tiiia.tallinen@tuni.fi +358505680428

Location: Arvo Ylpön katu 34, 33520 Tampere



6.7 Tampere Biobank

- A biobank collects samples and data from individuals who have given biobank consent for biomedical research and product development. It is a research infrastructure that enables efficient utilization of high-quality collected materials.
- Services and research opportunities:
 - Samples: Blood (whole blood, serum, plasma), isolated DNA, FFPE tissue/pathology specimens, cancer fresh tissue, ctDNA, and cerebrospinal fluid (CSF) samples
 - Opportunity for tailored, targeted collections
 - Data associated with samples: Clinical data - information related to the sample and donor, patient registry data (including diagnoses, treatment episodes, medications administered in the hospital, procedures, laboratory results, information extractable from reports)
 - National register data
 - Data recovered from previous biobank studies, e.g., FinnGen genomic data
 - Subjects
 - Opportunity to invite individuals who have given consent to be contacted to participate in studies (so-called Recall studies)
 - Expertise, other research collaboration projects, and development initiatives
- More information on starting your Biobank research: [Fingenious.fi](https://www.fingenious.fi)



**Finnish Clinical
Biobank Tampere**

Contacts:

biopankki@pirha.fi

[Finnish website](#)

[English website](#)

6.8 HealthHUB

- HealthHUB is an inspiring meeting place and community for participants who have a common goal, to improve human health and wellbeing.
- The HealthHUB brings together health, wellbeing, health technology and research-oriented companies and talents, and provides an environment for the co-development of new ideas and innovations.
- As a member of the HUB you have free access to the HealthHUB hot desk workstations and group workspace, found at Biokatu 12. You will also can be linked to other members of the community, initiate projects, organize events and propose news items.

Services for companies:

- Membership is free, but requires active participation, enthusiasm and a positive attitude – as well as a desire to cooperate with others to create something new and better.
- The HUB premises are situated on Tampere’s Kauppi campus, in the immediate vicinity of the university hospital. You will find six hot-desk workstations and a versatile group workspace, well equipped with presentation technology.

Prices: Prices will be defined based on customer needs. Please inquire!

Contacts:
Ilona Raitakari
Ilona.raitakari@business tampere.com

7 Social media and newsletters

Follow us and grab the best tips!

- **Tampere University** on [Facebook](#), [LinkedIn](#), [Instagram](#), [Youtube](#), [Partners in collaboration – newsletter](#)
- **Tampere University of Applied Sciences** on [Facebook](#), [LinkedIn](#), [Instagram](#), [TikTok](#), [Youtube](#)
 - Collaboration, partnerships and continuous learning on [LinkedIn](#)
- **The Wellbeing Services County of Pirkanmaa** on [Facebook](#), [LinkedIn](#), [Instagram](#)
- **Hakametsä Sport Campus** on [Facebook](#), [Instagram](#), [LinkedIn](#)
- **Varala Sports Institute** on [Facebook](#), [Instagram](#), [LinkedIn](#), [YouTube](#)
- **Tampere City** on [Facebook](#), [Instagram](#), [LinkedIn](#), [Bluesky](#), [YouTube](#)
- **UKK Institute** on [Facebook](#), [Instagram](#), [LinkedIn](#), [Youtube](#), [newsletter](#)
- **Tampere Research Center of Sports Medicine** on [Facebook](#), [Instagram](#)

THANK YOU

Contact: Tarja Heinonen, tarja.heinonen@tuni.fi
Tomorrow's Sports and Health project coordinator at TAU



Co-funded by
the European Union



PIRKANMAA
COUNCIL OF TAMPERE REGION



TAMPERE

The Wellbeing Services
County of Pirkanmaa



Tampere University



UKK Institute



Tampere Research Center
of Sports Medicine

VARALA