

A Deep Learning model for Predicting Traffic Conditions using GPS Bus Data

Smart TrafficHub / Älypysäkki

Rodrigo Borges

Supervisor: Kostas Stefanidis

February 11, 2021

Tampere University

- Predicting traffic conditions based on GPS Bus Data
- Predicting availability of bus lines based on historical information of occupation
- Predict individual boarding and alighting locations based on smart card data

- Predicting traffic conditions based on GPS Bus Data
- Predicting availability of bus lines based on historical information of occupation
- Predict individual boarding and alighting locations based on smart card data

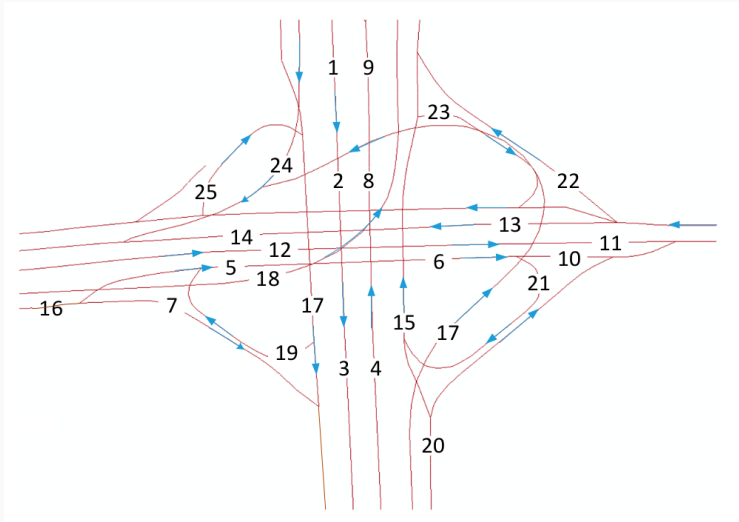
Table of contents

1. Goal
2. Data Preparation
3. Model
4. Future Works

Goal

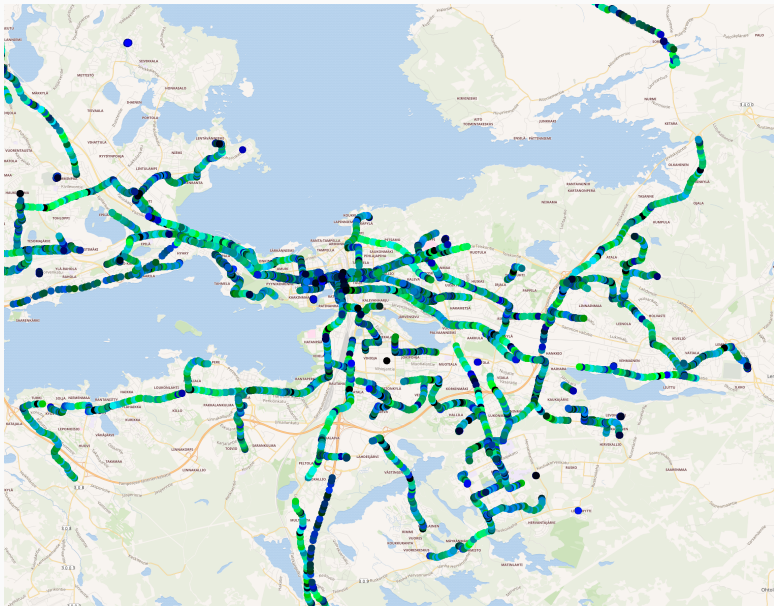
Goals

- Spatiotemporal dependency, capturing distant and causal effects

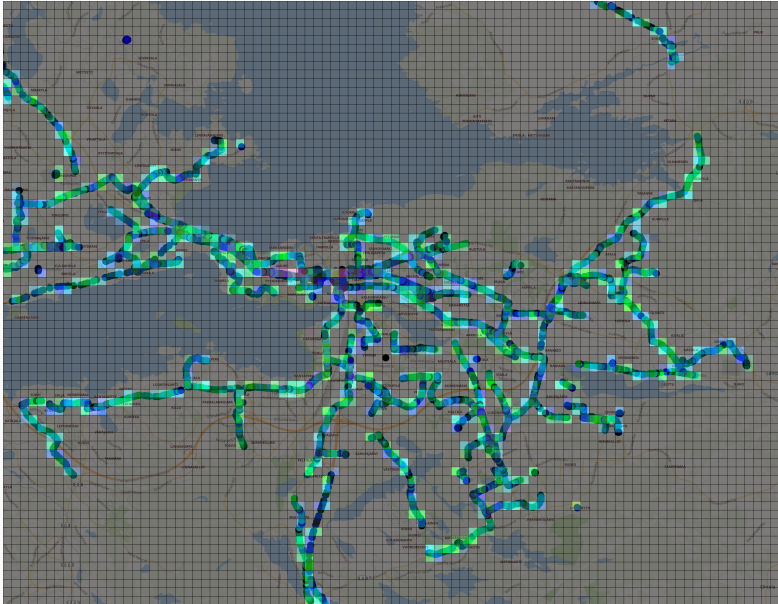


Data Preparation

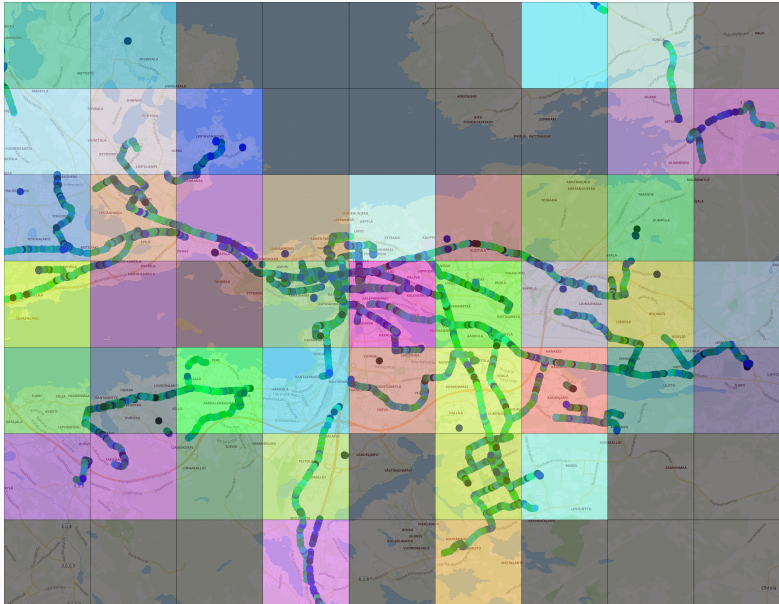
GPS Data - 5 minutes interval



GPS Data - 5 minutes interval (input)

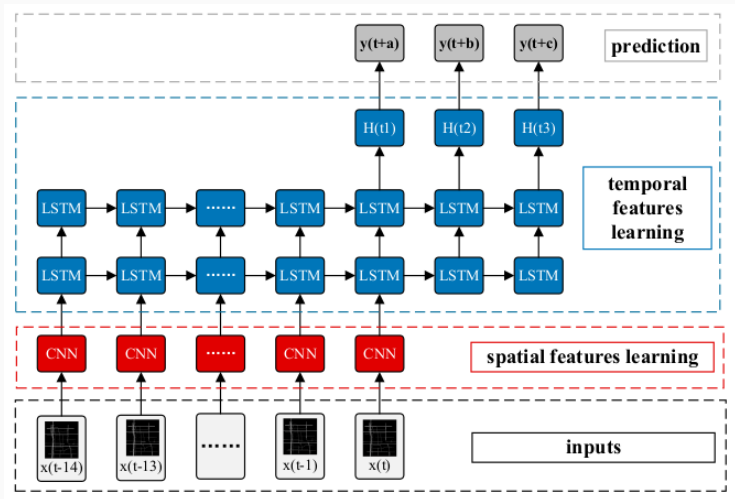


GPS Data - 5 minutes interval (prediction)



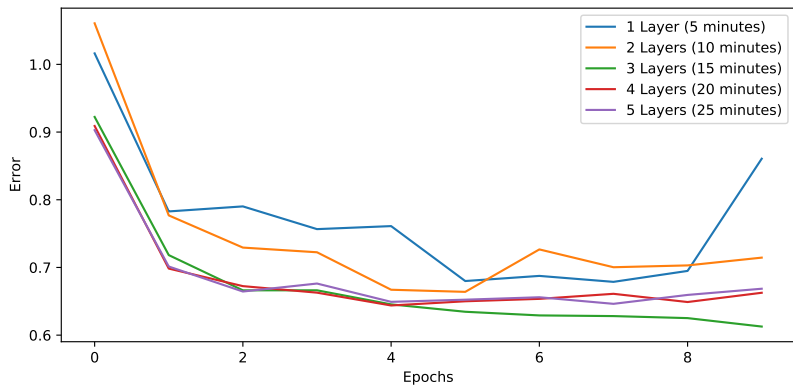
Model

GPS Data



(Yu, H. et al. "Spatiotemporal Recurrent Convolutional Networks for Traffic Prediction in Transportation Networks." Sensors 17 (2017))

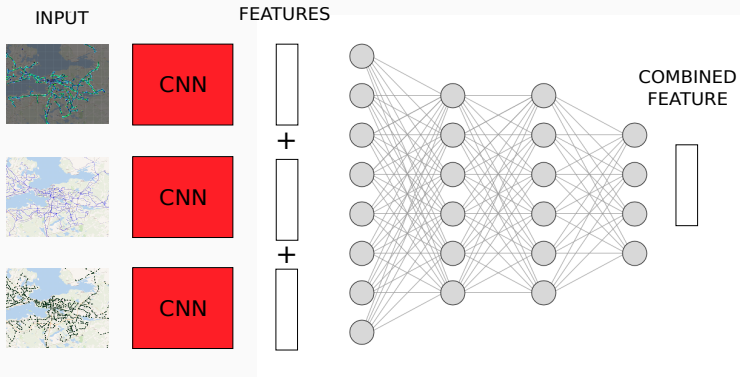
First Results



Future Works

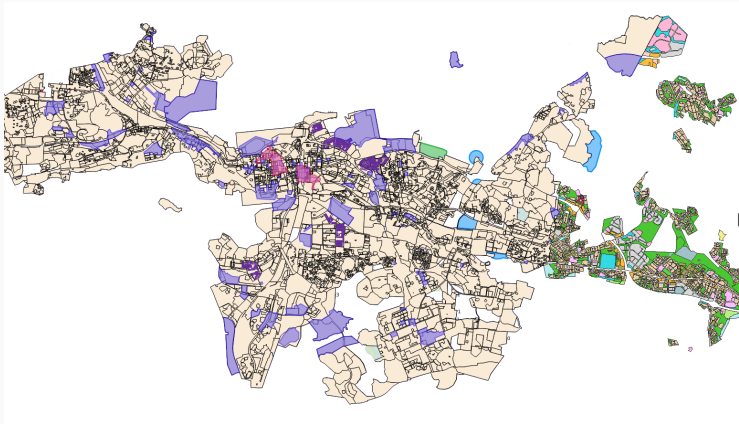
Data integration

- Combine long and short term memory
- Combine dynamic inputs like weather, humidity, sensors...



Prediction Shapes

- Complex shapes instead of regular grids



Thank you! Questions?

rodrigo.borges@tuni.fi